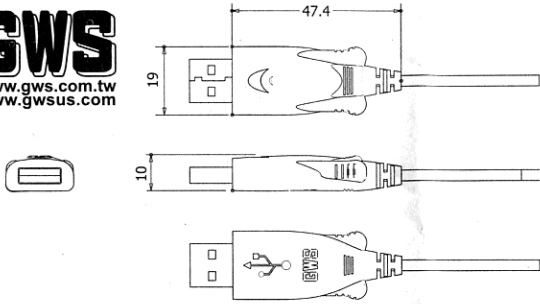




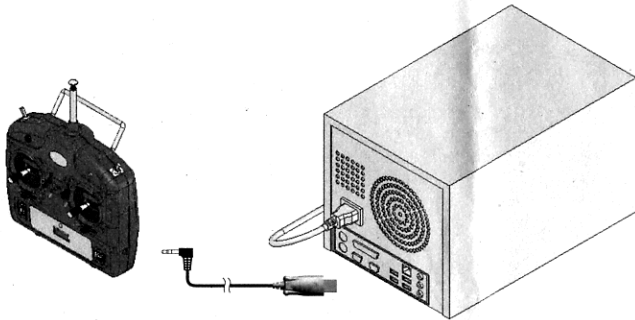
GWS
www.gws.com.tw
www.gwsus.com



MADE IN CHINA

Using the FSM USB :

1. Connect cable to a computer and install software.
連接至電腦並且打開模擬飛行軟體。



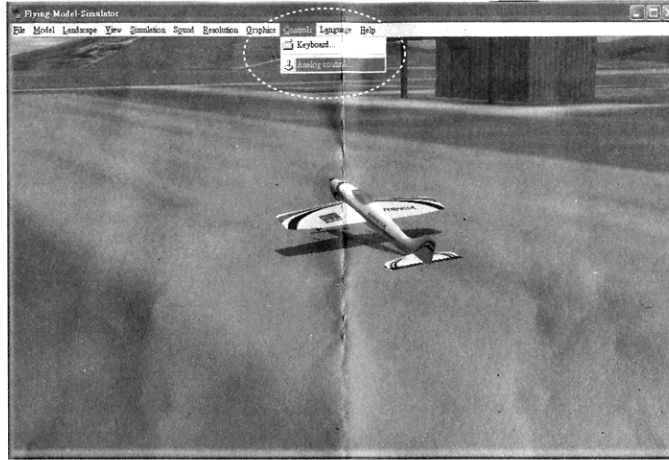
Make sure software is installed before connecting to transmitter.

Download the driver. -> www.gwsus.com.

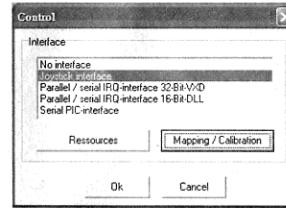
在使用之前，請先確認已安裝完成軟體安裝。

下載軟體 -> <http://www.gws.com.tw>

2. Click "Controls". Select "Analog Control..."
按"C控制"，選擇"類比控制(Z)..."。

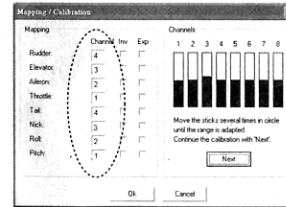


3. Select "Joystick interface". Click "Mapping / Calibration".
選擇"遊戲桿介面"，再按"對應 / 校準"。

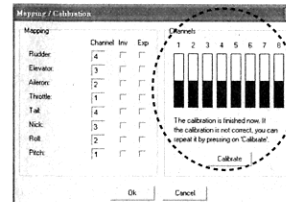


4. Map channels for your transmitter.
Figure shows mapping for GWS transmitter.

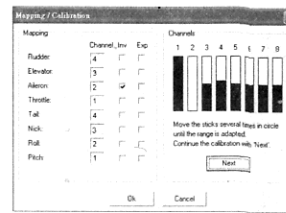
於「映射」對話框內設定操縱項目對應的通道。
如GWS發射機可參考。



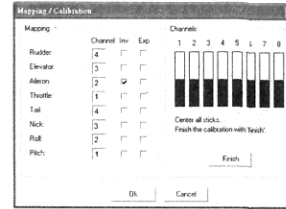
5. Calibrate all channels for transmitter Click "Calibrate".
於「通道數」對話框內校準電腦和您的發射機之間的連接訊號。
按"校準"。



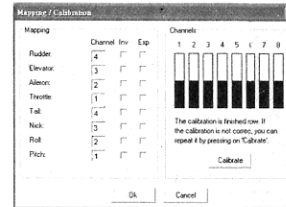
6. Move the sticks several times in circle until the range is adapted. Continue the calibration with "Next".
依照對話框指示，發射機左右搖桿推至底，並圓形移動直到訊號涉及所有範圍後，按"下一步"。



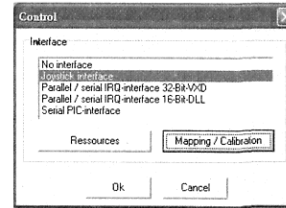
7. Center all sticks. Finish the calibration with "Finish".
所有搖桿都撥回置中位置後，按"結束"。



8. Click "OK". Finish the Mapping / Calibration setup.
按"確定"以結束「映射 / 校準」設定。



9. Click "OK". Setup is complete.
於「無線遙控設定」視窗內，按"確定"結束所有設定。



廣營電子有限公司(GWS Headquarter)
Grand Wing Servo-Tech Co., Ltd.
221台北縣汐止市大同路二段153號
No.153, Sec.2, Datung Rd., Shijr City,
Taipei 221, Taiwan, R.O.C.
TEL:+886-2-8692-6255
FAX:+886-2-8692-6845 or +886-2-8692-6843
International Inquiry: export@gws.com.tw
After service: service@gws.com.tw

大陸分公司
東莞廣營電子科技有限公司
Grand Wing System China, Inc.
中國廣東省東莞市謝崗鎮華泰科技園區
Huatai Keji Yuanqu, Xiegang Town,
Dongguan City, Guangdong, P.R.C.
TEL:+86-769-8768-0000
FAX:+86-769-8763-9555
E-mail: china@gws.com.tw

美國分公司
Grand Wing System U.S.A. Inc.
138 S. Brent Circle, City of Industry,
CA 91789-3050
TEL:+1-909-594-GWS9(4979)
FAX:+1-909-594-8051
USA Inquiry: sales@gwsus.com
After service: service@gwsus.com

GWS
www.gws.com.tw
www.gwsus.com